

# MOUNTED POINTS

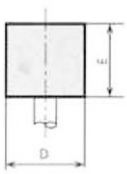
## Main features:

- Mounted points for internal cylindrical grinding
- Sizes ranging from 3 to 76 millimetres in diameter
- Manufactured from hundreds of different grains
- Available with vitrified, resin and rubber bonds
- Fullfillment of custom orders

## Grinding tool with shaft:

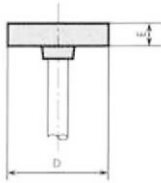
Manufactured sizes:  $\varnothing 3-76$

Some products are available on stock



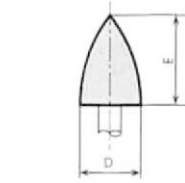
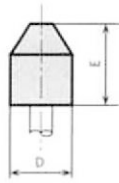
Cylindrical grinding tool with shaft

MSZ 4522/1-83



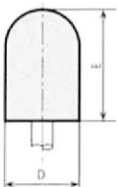
Cylindrical-conical grinding tool with shaft

MSZ 4522/2-83



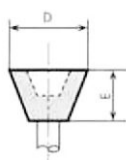
Cambered grinding tool with shaft

MSZ 4522/3-83



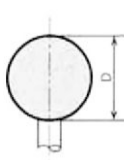
Cylindrical round-ended grinding tool with shaft

MSZ 4522/4-83



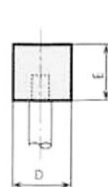
Flaring-Cup grinding tool with shaft

MSZ 4522/5-83



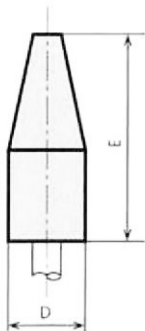
Spherical grinding tool with shaft

MSZ 4522/6-83

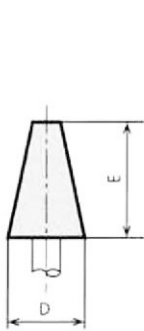


Steel shafts grinding tool with shaft

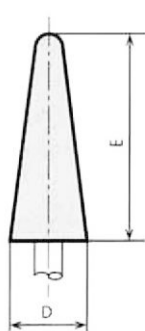
MSZ 4522/1-83



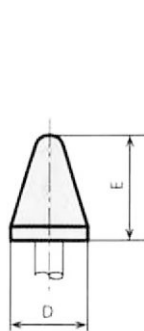
A1



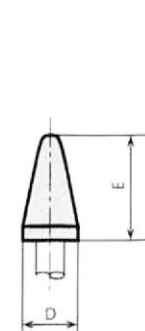
A2



A3



A4



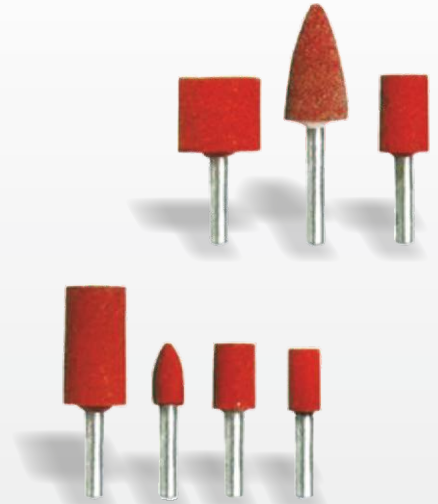
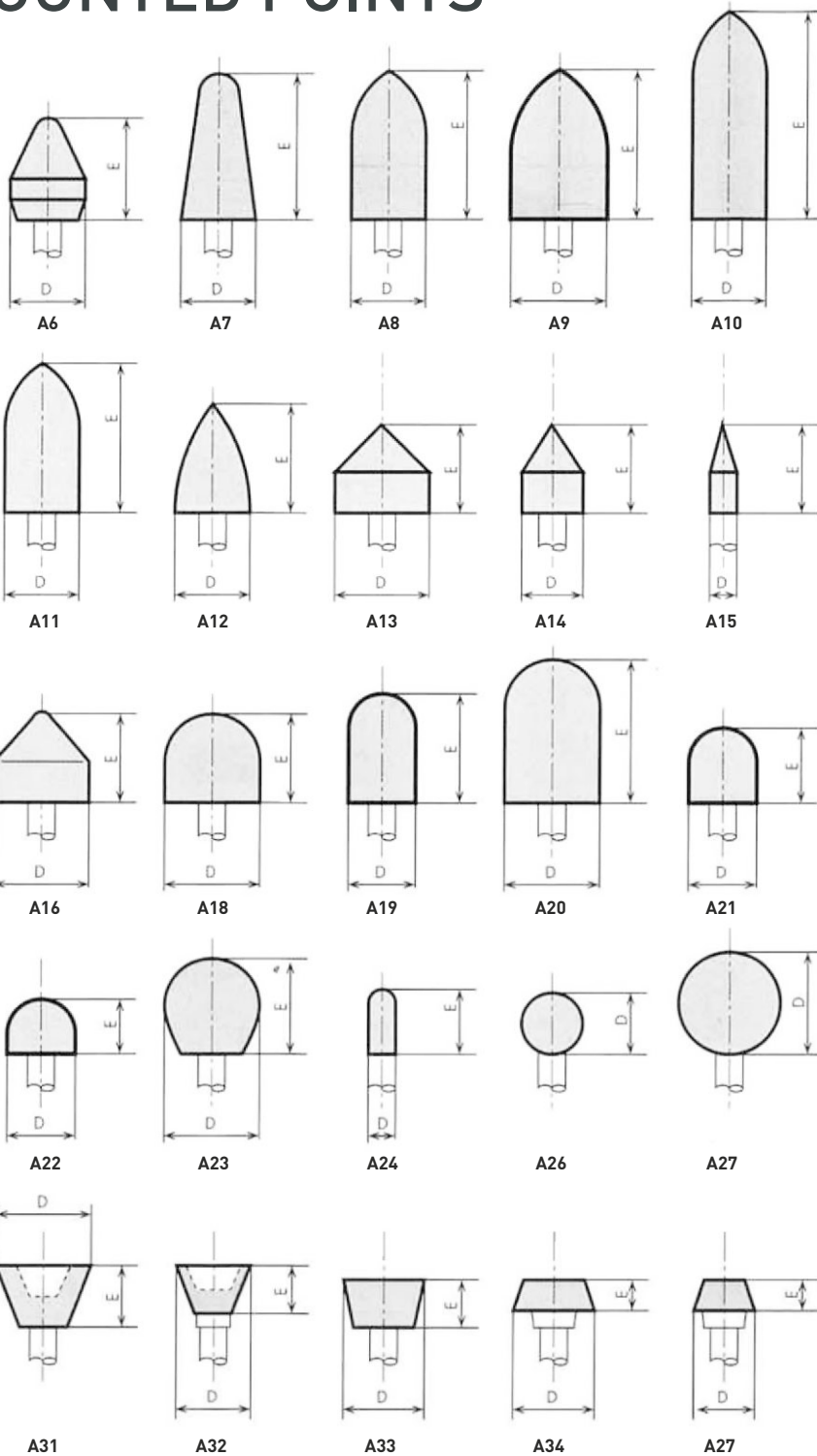
A5



**WIDENTA**

Member of **MPF** INDUSTRY GROUP

# MOUNTED POINTS



**WIDENTA**

Member of **MPF** INDUSTRY GROUP

## Grain type:

Name	Material	Name	Material
1A	Aluminium oxide	1C	Black silicon carbide
6A	White aluminium oxide	2C	Green silicon carbide
7A	Pink aluminium oxide	16A	Mix of 1A and 6A
8A	Red aluminium oxide	12C	Mix of 1C and 2C